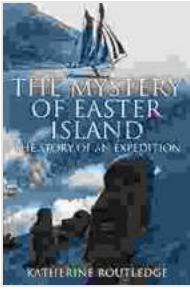


Unveiling the Enigmatic Easter Island: A Journey into Ancient Mysteries



Nestled amidst the vast expanse of the Pacific Ocean, Easter Island remains an enigma wrapped in a shroud of mystery. Its iconic moai statues, enigmatic petroglyphs, and intricate culture have fascinated and perplexed scholars, explorers, and travelers alike for centuries. In this captivating article, we embark on a journey to explore the captivating secrets of Easter Island, unraveling its ancient mysteries and shedding light on its enigmatic past.

The Mystery of Easter Island: The Story of an Expedition by Katherine Routledge



★ ★ ★ ★ ☆ 4.1 out of 5
Language : English
File size : 2393 KB
Text-to-Speech : Enabled
Screen Reader : Supported
Enhanced typesetting : Enabled
X-Ray : Enabled
Word Wise : Enabled
Print length : 349 pages



The Enigma of the Moai

The most striking feature of Easter Island is its colossal moai statues, towering over the rugged landscape like silent sentinels. These monolithic figures, carved from volcanic tuff, stand as a testament to the ingenuity and artistry of the Rapa Nui people, the island's original inhabitants.



The exact purpose of the moai remains a subject of intense debate. Some theories suggest they represented deceased ancestors, serving as guardians and protectors of the Rapa Nui people. Others believe they were symbols of power and prestige, associated with important chiefs or religious leaders.

Mysterious Petroglyphs

Beyond the enigmatic moai, Easter Island is adorned with a wealth of petroglyphs, intricate carvings etched into the volcanic rock. These ancient inscriptions depict a diverse array of motifs, including human figures, animals, plants, and abstract designs.



The petroglyphs provide a glimpse into the cultural beliefs and practices of the Rapa Nui people. Some depict scenes from everyday life, while others have religious or ceremonial significance. Notably, Easter Island is home to the rongorongo tablets, unique inscribed wooden planks that contain an undeciphered script.

Environmental Collapse and Cultural Transformation

The history of Easter Island is marked by a dramatic environmental collapse that had profound implications for its inhabitants. Deforestation, soil erosion, and the of invasive species led to a decline in agricultural productivity, causing widespread famine and social unrest.



This environmental crisis forced the Rapa Nui people to adapt and transform their culture. They shifted from a primarily agrarian society to one based on fishing and resource exploitation. However, the population dwindled, and by the time European explorers arrived in the 18th century, the island had only a fraction of its former inhabitants.

Exploring Easter Island Today

Today, Easter Island remains a captivating destination that attracts visitors from around the world. The Rapa Nui National Park, established in 1935,

protects the island's cultural and natural treasures. Visitors can marvel at the iconic moai statues, explore the enigmatic petroglyph sites, and immerse themselves in the unique history and culture of Easter Island.



To fully appreciate the mysteries and wonders of Easter Island, it is highly recommended to embark on a guided tour. Knowledgeable guides will provide insights into the island's history, culture, and ongoing archaeological discoveries. Visitors may also choose to participate in cultural activities, such as traditional Rapa Nui dance performances or boat tours along the island's shores.

Easter Island remains a land of enduring fascination, where ancient mysteries and enigmatic wonders intertwine. Its iconic moai statues, enigmatic petroglyphs, and tumultuous history captivate the imagination and inspire awe. By exploring Easter Island, we not only unravel the secrets of the past but also gain a deeper understanding of the human spirit and our relationship with the natural world.

Whether you are an adventurous traveler, a history buff, or simply curious about the unknown, a visit to Easter Island is an unforgettable experience. Embrace the mystery and enchantment of this remote island, and embark on a journey that will forever alter your perspective.



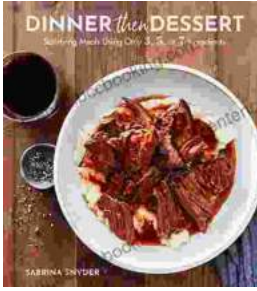
The Mystery of Easter Island: The Story of an Expedition

by Katherine Routledge

★★★★☆ 4.1 out of 5

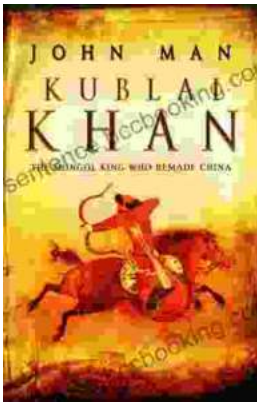
Language : English
File size : 2393 KB
Text-to-Speech : Enabled
Screen Reader : Supported
Enhanced typesetting : Enabled
X-Ray : Enabled
Word Wise : Enabled
Print length : 349 pages





Discover the World of Satisfying Meals with Or Ingredients: A Culinary Oasis for Health and Flavor

In a world where culinary creations often rely on a plethora of exotic ingredients and complex techniques, the concept of "or" ingredients presents a refreshing and...



Journey into the Extraordinary Life of Kublai Khan: An Epic Saga of Conquest and Empire

Immerse Yourself in the Fascinating World of the Great Khan Prepare to be transported to a time of towering ambition, unprecedented conquest, and cultural...