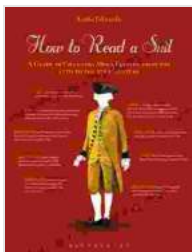


Unlock the Secrets of Nonverbal Communication: A Comprehensive Guide to Reading Suits

In the realm of human interaction, nonverbal cues play a pivotal role in conveying messages and shaping our perceptions. Among these cues, clothing stands as a powerful form of nonverbal communication, capable of revealing insights into a person's personality, intentions, and social status. Suits, in particular, hold a unique place in the world of fashion, often associated with professionalism, authority, and sophistication.



How to Read a Suit: A Guide to Changing Men's Fashion from the 17th to the 20th Century by Lydia Edwards

★★★★☆ 4.7 out of 5

Language : English
File size : 97346 KB
Text-to-Speech : Enabled
Screen Reader : Supported
Enhanced typesetting : Enabled
Print length : 633 pages



However, deciphering the hidden meanings behind suits can be a daunting task. This comprehensive guide will empower you to read suits like a pro, giving you the edge in business, dating, and everyday interactions. By delving into the psychology of clothing, the significance of colors and patterns, and the subtle cues that reveal a person's true self, you will gain an unparalleled understanding of nonverbal communication.

The Psychology of Suits

Suits are more than just articles of clothing; they are symbols of power, status, and identity. The act of wearing a suit can transform a person's self-perception and behavior. Studies have shown that people who wear suits tend to feel more confident, assertive, and authoritative.

The psychology of suits can be traced back to their historical origins. In the 19th century, suits became the standard attire for businessmen and politicians, signaling their social status and professional competence. Over time, suits have evolved into a symbol of power and authority, worn by leaders and decision-makers around the world.

The Significance of Colors and Patterns

The color and pattern of a suit can convey a range of messages. Neutral colors such as black, navy, and gray are often associated with professionalism, seriousness, and authority. Brighter colors such as blue, green, and red can indicate creativity, approachability, and warmth.

Patterns can also add layers of meaning to a suit. Subtle patterns such as pinstripes or herringbone can create a sense of sophistication and refinement. Bold patterns such as checks or plaids can convey a more casual and approachable demeanor.

Deciphering the Subtle Cues

Beyond the color and pattern, there are a number of subtle cues that can reveal a person's personality and intentions. These cues include the fit of the suit, the choice of accessories, and the way the suit is worn.

A well-fitting suit conveys a sense of confidence and attention to detail. Accessories such as cufflinks, ties, and pocket squares can add personal touches and provide insights into a person's style and personality. The way a suit is worn, whether it is buttoned up or unbuttoned, can also reveal a person's level of formality and openness.

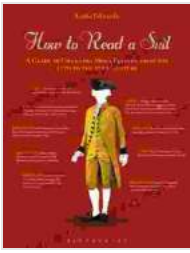
Reading Suits in Different Contexts

The interpretation of suits can vary depending on the context. In a business setting, a dark suit with a conservative cut and color will convey a sense of professionalism and authority. In a social setting, a more relaxed suit with a brighter color or pattern can indicate a more approachable and friendly demeanor.

It is important to consider the context when interpreting suits. The same suit can convey different messages depending on the occasion and the environment.

Mastering the art of reading suits is an invaluable skill that can give you a significant advantage in a wide range of social and professional situations. By understanding the psychology of clothing, the significance of colors and patterns, and the subtle cues that reveal a person's true self, you will gain an unparalleled advantage in nonverbal communication.

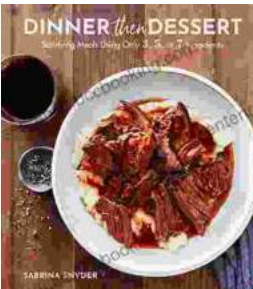
This comprehensive guide has provided you with the tools and knowledge you need to become a master of reading suits. Now, go forth and use this newfound power to navigate the complexities of human interaction with confidence and finesse.



How to Read a Suit: A Guide to Changing Men's Fashion from the 17th to the 20th Century by Lydia Edwards

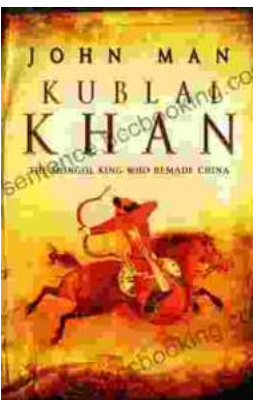
★★★★☆ 4.7 out of 5

Language : English
File size : 97346 KB
Text-to-Speech : Enabled
Screen Reader : Supported
Enhanced typesetting : Enabled
Print length : 633 pages



Discover the World of Satisfying Meals with Or Ingredients: A Culinary Oasis for Health and Flavor

In a world where culinary creations often rely on a plethora of exotic ingredients and complex techniques, the concept of "or" ingredients presents a refreshing and...



Journey into the Extraordinary Life of Kublai Khan: An Epic Saga of Conquest and Empire

Immerse Yourself in the Fascinating World of the Great Khan Prepare to be transported to a time of towering ambition, unprecedented conquest, and cultural...