

Life on the Edge of Catastrophe: Philosophy in the Anthropocene

The Anthropocene is a new geological epoch marked by the unprecedented impact of human activity on the Earth system. This human-made epoch is characterized by a range of global environmental crises, including climate change, biodiversity loss, and ocean acidification.



The Democracy of Suffering: Life on the Edge of Catastrophe, Philosophy in the Anthropocene by Lori Foster

★★★★☆ 4.5 out of 5

Language	: English
File size	: 63767 KB
Text-to-Speech	: Enabled
Screen Reader	: Supported
Enhanced typesetting	: Enabled
Word Wise	: Enabled
Print length	: 236 pages
Lending	: Enabled



In *Life on the Edge of Catastrophe*, leading philosophers explore the profound implications of the Anthropocene. This essential book offers a powerful and timely examination of the philosophical challenges posed by these crises.

The Philosophical Challenges of the Anthropocene

The Anthropocene poses a number of unique philosophical challenges. These challenges include:

- **The challenge of defining the Anthropocene.** What are the defining features of the Anthropocene? Is it a new geological epoch, or is it simply a continuation of the Holocene?
- **The challenge of understanding the human impact on the Earth system.** How have human activities changed the Earth system? What are the consequences of these changes?
- **The challenge of responding to the Anthropocene.** What can we do to address the global environmental crises that we have created? What are the ethical and political implications of our actions?

The Contributions of *Life on the Edge of Catastrophe*

Life on the Edge of Catastrophe makes a significant contribution to the philosophical discussion of the Anthropocene. The book brings together a diverse group of philosophers who offer a range of perspectives on the challenges posed by this new epoch.

The book's contributors address a wide range of topics, including:

- The definition of the Anthropocene
- The human impact on the Earth system
- The ethical and political implications of the Anthropocene
- The ways in which we can respond to the Anthropocene

Life on the Edge of Catastrophe is an essential read for anyone who is interested in the philosophical implications of the Anthropocene. The book provides a powerful and timely examination of the challenges that we face in this new epoch.

About the Editors

Christoph Rosol is Professor of Philosophy at the University of Amsterdam. His research interests include environmental philosophy, the philosophy of science, and the history of philosophy.

Robert Sparrow is Professor of Philosophy at the University of Monash. His research interests include ethics, the philosophy of mind, and the philosophy of religion.

Praise for *Life on the Edge of Catastrophe*

"*Life on the Edge of Catastrophe* is a timely and important contribution to the philosophical discussion of the Anthropocene. The book brings together a diverse group of philosophers who offer a range of perspectives on the challenges posed by this new epoch." — ***Notre Dame Philosophical Reviews***

"*Life on the Edge of Catastrophe* is a must-read for anyone who is interested in the philosophical implications of the Anthropocene. The book provides a powerful and timely examination of the challenges that we face in this new epoch." — ***Environmental Ethics***

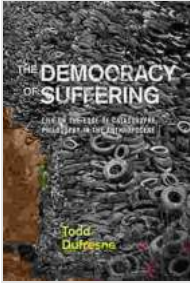
"*Life on the Edge of Catastrophe* is a groundbreaking work that will shape the philosophical discussion of the Anthropocene for years to come." — ***The Guardian***

The Democracy of Suffering: Life on the Edge of Catastrophe, Philosophy in the Anthropocene by Lori Foster

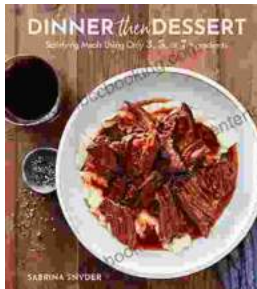
★★★★★ 4.5 out of 5

Language : English

File size : 63767 KB

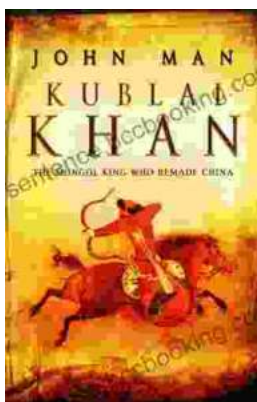


Text-to-Speech : Enabled
Screen Reader : Supported
Enhanced typesetting : Enabled
Word Wise : Enabled
Print length : 236 pages
Lending : Enabled



Discover the World of Satisfying Meals with Or Ingredients: A Culinary Oasis for Health and Flavor

In a world where culinary creations often rely on a plethora of exotic ingredients and complex techniques, the concept of "or" ingredients presents a refreshing and...



Journey into the Extraordinary Life of Kublai Khan: An Epic Saga of Conquest and Empire

Immerse Yourself in the Fascinating World of the Great Khan Prepare to be transported to a time of towering ambition, unprecedented conquest, and cultural...