

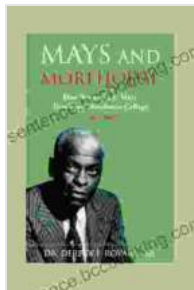
# How Benjamin Mays Developed Morehouse College 1940 1966



## The Legacy of a Trailblazing Educator

Dr. Benjamin Elijah Mays, a towering figure in American education and civil rights, left an enduring mark on Morehouse College during his tenure as its

president from 1940 to 1966. His unwavering commitment to academic excellence, mentorship, and social activism propelled Morehouse into a new era of progress and influence.



## Mays and Morehouse: How Benjamin E. Mays

**Developed Morehouse College 1940-1966** by Nigel Blundell

★★★★★ 5 out of 5

Language	: English
File size	: 516 KB
Text-to-Speech	: Enabled
Screen Reader	: Supported
Enhanced typesetting	: Enabled
Word Wise	: Enabled
Print length	: 172 pages
Lending	: Enabled



### Early Years and the Challenge of Leadership

Born in 1894 in rural South Carolina, Benjamin Mays faced adversity from a young age. Despite the challenges, he excelled academically, earning degrees from Bates College and the University of Chicago. In 1940, he became the fifth president of Morehouse College, a small, financially struggling institution at the time.

### Transforming the Academic Landscape

Mays embarked on a mission to transform Morehouse into a nationally recognized center of academic excellence. He raised funds, expanded the faculty, and introduced rigorous curricula. Under his leadership, the college's reputation soared, attracting top students and scholars.

## **Mentorship and Empowerment**

Beyond academic rigor, Mays recognized the importance of mentorship and empowerment. He nurtured the intellectual and personal growth of countless students, including the civil rights leaders Martin Luther King Jr. and Julian Bond. Mays believed that education was the key to uplifting African Americans and fighting racial injustice.

## **Social Activism and the Civil Rights Movement**

Dr. Mays was a vocal advocate for civil rights throughout his career. He used his platform as president of Morehouse to promote interracial cooperation and challenge racial segregation. He marched alongside his students in the Selma to Montgomery marches and was a close confidant of Martin Luther King Jr.

## **Building a Legacy**

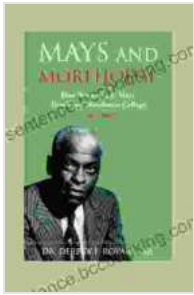
Mays' transformative leadership left a lasting impact on Morehouse College and beyond. Under his guidance, the college became a hub of intellectual and social activism, shaping generations of leaders and advocates for social change.

## **Legacy and Recognition**

Dr. Benjamin Mays retired as president of Morehouse in 1966, but his legacy continues to inspire educators and activists today. He received numerous accolades, including the Presidential Medal of Freedom, the nation's highest civilian honor.

Dr. Benjamin Mays' tenure as president of Morehouse College from 1940 to 1966 witnessed a remarkable transformation of the institution. His

unwavering commitment to academic excellence, mentorship, and social activism propelled Morehouse into a beacon of progress and influence in the African American community and beyond. His legacy serves as an enduring testament to the power of education and the transformative leadership that can shape the lives of generations.

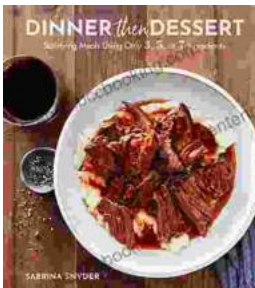


## Mays and Morehouse: How Benjamin E. Mays

**Developed Morehouse College 1940-1966** by Nigel Blundell

★★★★★ 5 out of 5

Language : English  
File size : 516 KB  
Text-to-Speech : Enabled  
Screen Reader : Supported  
Enhanced typesetting : Enabled  
Word Wise : Enabled  
Print length : 172 pages  
Lending : Enabled



## Discover the World of Satisfying Meals with Or Ingredients: A Culinary Oasis for Health and Flavor

In a world where culinary creations often rely on a plethora of exotic ingredients and complex techniques, the concept of &quot;or&quot; ingredients presents a refreshing and...



## **Journey into the Extraordinary Life of Kublai Khan: An Epic Saga of Conquest and Empire**

Immerse Yourself in the Fascinating World of the Great Khan Prepare to be transported to a time of towering ambition, unprecedented conquest, and cultural...